

VERPAN



PRICE LIST / FURNITURE - *January 2018*

USD.

GENERAL INFORMATION

DELIVERY TIME

Standard delivery upholstery: 5-7 weeks.
Standard delivery stock: 1-3 weeks.

WARRANTY

A warranty on workmanship is granted for two years in Europe and one year outside Europe. General wear and tear or misuse is NOT covered by the warranty.

PRICES

Prices are subject to change due to currency fluctuation.

CANCELLATION FEE

Cancellation of production items less than 14 days prior to delivery will be subject to a 100 % fee of the total order amount.

PAYMENT

Payment only valid by bank transfer to:

BANK: Danske Bank A/S

EUR / DKK / USD

SWIFT: DABADKKK
IBAN: DK1330004387020403
ACCOUNT: 3675-4387020403

SEK (SWEDEN ONLY)

BANKGIRO: 442-8736

GBP (UK ONLY)

SORT CODE: 301281
ACCOUNT: 35005625

NOK (NORWAY ONLY)

ACCOUNT: 86013449920 (FOKUS BANK)

COMPANY DETAILS

Verpan Aps
Egeskovvej 29, DK-8700 Horsens
www.verpan.com

CVR: 27191150
VAT NO: DK 27191150

We are not responsible for errors or omissions, and reserve the right to make future changes.

CONTENTS

- 1 SEATING
- 6 SOFAS
- 10 IN- AND OUTDOOR SOFA
- 11 TABLES
- 13 STORAGE
- 14 WARDROBE & OFFICE
- 15 RUGS
- 17 WALL DECORATIONS
- 18 THROWS

UPHOLSTERY

The mentioned fabrics/leather at each product are standard fabrics/leather selected by VERPAN.

Requests for other fabrics please contact your sales representative.

*Messenger/Metrics prices only for selected colours.

For all COM enquiries please contact your local Verpan sales representative or call us on +45 7658 1882. Please note that there is a general one-off charge for any new COM fabric or leather. This is to cover cost of the extensive tests that has to be done ensuring a product in the usual superior Verpan quality.

In cases where Verpan has a trade agreement with the fabric supplier, COM is not possible.

EUR	2.000
GBP	1.650
USD	2.700
DKK	15.000
SEK	17.500
NOK	16.500

SEATING

RETAIL PRICE USD



SYSTEM 1-2-3 DINING CHAIR STANDARD

Design: Verner Panton, 1973

H: 86 cm; D: 60 cm
 Seat height: 47 cm; Seat width: 50 cm
 Base: Brushed aluminium

Art. no: 910101xx

Fabric:	
Messenger 4*, Metric*	1.305
Hallingdal 65, Tonus 4, Steelcut Trio	1.525
Vidar	1.610
Noise	1.795
Pilot	2.015

Leather:	
Ultra	1.795
Hero	2.305
Dunes	2.940



SYSTEM 1-2-3 DINING CHAIR DELUXE

Design: Verner Panton, 1973

H: 86 cm; D: 60 cm
 Seat height: 47 cm; Seat width: 50 cm
 Base: Brushed aluminium

Art. no: 910201xx

Fabric:	
Messenger 4*, Metric*	2.015
Hallingdal 65, Tonus 4, Steelcut Trio	2.565
Harald 3	2.845
Vidar	

Leather:	
Ultra	2.865
Hero	3.670
Dunes	4.545



SYSTEM 1-2-3 LOW LOUNGE STANDARD

Design: Verner Panton, 1973

H: 89 cm; D: 52 cm; seat width: 59 cm
 Seat height/front: 38 cm; back: 34 cm
 Base: Brushed aluminium

Art. no: 910301xx

Fabric:	
Messenger 4*, Metric*	1.385
Hallingdal 65, Tonus 4, Steelcut Trio	1.805
Vidar	
Noise	2.200
Pilot	2.565

Leather:	
Ultra	2.215
Hero	3.115
Dunes	4.370



SYSTEM 1-2-3 LOW LOUNGE DELUXE

Design: Verner Panton, 1973

H: 89 cm; D: 52 cm; seat width: 59 cm
 Seat height/front: 38 cm; back: 34 cm
 Base: Brushed aluminium

Art. no: 910401xx

Fabric:	
Messenger 4*, Metric*	2.515
Hallingdal 65, Tonus 4, Steelcut Trio	3.115
Harald 3	3.465
Vidar	

Leather:	
Ultra	3.300
Hero	4.220
Dunes	5.770



FELT FOR SYSTEM 1-2-3 CHAIRS WITH ROUND BASE Ø47

Felt for dining and lounge chair

Art. no: 489115

20

SEATING

RETAIL PRICE USD



SERIES 430 CHAIR

Design: Verner Panton, 1967

H: 82 cm, seat height: 46 cm, Ø46 cm
Fully upholstered stacking chair with black or white painted metal frame.

4 colours in stock, black frame
Hallingdal 65 col. 130 and 180
Harald 3 col. 982 and 182
No minimum order quantity for stock items
For other colours and fabrics min. order quantity is 2 pcs

Art. no. White : 910703xx

Art. no. Black : 910701xx

Fabric:

Messenger 4, Metric** **895**

Pandoria, Parotega **965**

Hallingdal 65, Tonus 4, Steelcut Trio **1.025**

Harald 3 **1.095**

Vidar **1.150**

Noise, Crystal Field **1.340**

Pilot **1.525**

Leather:

Ultra **1.200**

Hero **1.315**

Dunes **1.575**



SERIES 430 BAR STOOL

Design: Verner Panton, 1967

Seat height: 65 cm or 75 cm, Ø46 cm
H: 100 cm or 110 cm
Bar stool with fully upholstered seat and back, black painted metal frame.

Minimum qty.: 2 pcs, same fabric/colour

Art. no. H:65 cm : 910705xx

Art. no. H:75 cm : 910706xx

Fabric:

Messenger 4, Metric** **1.175**

Pandoria, Parotega **1.260**

Hallingdal 65, Tonus 4, Steelcut Trio **1.280**

Harald 3 **1.330**

Vidar **1.385**

-

Leather:

-

Ultra **1.420**

Hero **1.535**

Dunes **1.795**



SEATING

RETAIL PRICE USD

SERIES 430 STOOL

Design: Verner Panton, 1967



H: 46 cm, Ø45 cm
Fully upholstered stacking stool with black or white painted metal frame.

4 colours in stock, black frame
Harald 3 col. 443 and 543
Crystal Field col. 153 and 193
No minimum order quantity for stock items
For other colours and fabrics min. order quantity is 2 pcs

Art. no. White : 910704xx
Art. no. Black : 910702xx

Fabric:	
Messenger 4*, Metric*	615
Pandoria, Parotega	665
Hallingdal 65, Tonus 4, Steelcut Trio	695
Harald 3	730
Vidar	765
Noise, Crystal Field	780
Pilot	910

Leather:	
Ultra	825
Hero	940
Dunes	1.155



MODULAR CHAIR

Design: Verner Panton, 1959/1960



H: 42 cm; Seat Ø: 52 cm; Base: Ø34 cm
Frame : Solid metal Ø16mm, polished and chrome plated
Top : Plywood plate, CMHR Foam

Art. no: 910503xx

Fabric:	
Messenger 4*, Metric*	605
Hallingdal 65, Tonus 4, Steelcut Trio	730
Harald 3	815
Vidar	790
Noise	910
Pilot	1.015

Leather:	
Ultra	755
Hero	910
Dunes	1.095

PANTO POP

Design: Verner Panton, 1969



H: 54 cm; Ø81 cm
ABS material (UV-filter for outdoor use)
Comes in a box with 4 chairs in same colour

Art. no: 9106000-06 (price per chair)

White 255

PANTO POP

Design: Verner Panton, 1969



H: 54 cm; Ø81 cm
ABS material (UV-filter for outdoor use)
Comes in a box with 4 chairs in same colour

Art. no: 9106000-17 (price per chair)

Red 255

SEATING

RETAIL PRICE USD



WELLE 1

Design: Verner Panton, 1969

H: 102 cm; L: 162 cm; W: 50 cm

Polyurethane foam

MDF base with nylon glides

Art. no: 960401xx

Fabric:

Messenger 4, Metric** **2.305**

Pandoria, Parotega **2.750**

Hallingdal 65, Tonus 4, Steelcut Trio **3.115**

Vidar **3.145**



WELLE 2

Design: Verner Panton, 1969

H: 80 cm; L: 108 cm; W: 50 cm

Polyurethane foam

MDF base with nylon glides

Art. no: 960402xx

Fabric:

Messenger 4, Metric** **1.465**

Pandoria, Parotega **1.645**

Hallingdal 65, Tonus 4, Steelcut Trio **1.885**

Vidar **2.095**



WELLE 3

Design: Verner Panton, 1969

H: 70 cm; L: 240 cm; W: 50 cm

Polyurethane foam

MDF base with nylon glides

Art. no: 960403xx

Fabric:

Messenger 4, Metric** **2.935**

Pandoria, Parotega **3.300**

Hallingdal 65, Tonus 4, Steelcut Trio **3.670**

Vidar **4.115**



WELLE 4

Design: Verner Panton, 1969

H: 63 cm; L: 140 cm; W: 50 cm

Polyurethane foam

MDF base with nylon glides

Art. no: 960404xx

Fabric:

Messenger 4, Metric** **1.385**

Pandoria, Parotega **1.570**

Hallingdal 65, Tonus 4, Steelcut Trio **1.840**

Vidar **2.145**

SEATING

RETAIL PRICE USD



WELLE 5

Design: Verner Panton, 1969

H: 40 cm; L: 108 cm; W: 50 cm

Polyurethane foam

MDF base with nylon glides

Art. no: 960405xx

Fabric:

Messenger 4, Metric** **1.095**

Pandoria, Parotega **1.280**

Hallingdal 65, Tonus 4, Steelcut Trio **1.465**

Vidar **1.675**



WELLE 6

Design: Verner Panton, 1969

H: 40 cm; L: 54 cm; W: 50 cm

Polyurethane foam

MDF base with nylon glides

Art. no: 960406xx

Fabric:

Messenger 4, Metric** **695**

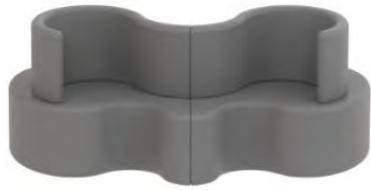
Pandoria, Parotega **805**

Hallingdal 65, Tonus 4, Steelcut Trio **955**

Vidar **1.095**

SOFAS

RETAIL PRICE USD



CLOVERLEAF SOFA - 2 units

Design: Verner Panton, 1969

Build-up system

L: 229 cm, W: 116 cm

Seat capacity min. 3

Wood frame, CMHR foam

Art. no: 960204xx

Fabric:

Messenger 4, Metric** **9.905**

Pandoria, Parotega **12.480**

Hallingdal 65, Tonus 4, Steelcut Trio **14.065**

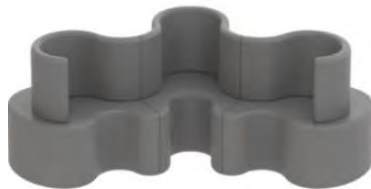
Harald 3 **15.610**

Vidar **16.380**

Leather:

Ultra **16.530**

Hero **18.370**



CLOVERLEAF SOFA - 3 units

Design: Verner Panton, 1969

Build-up system

L: 306 cm, W: 215 cm

Seat capacity min. 5

Wood frame, CMHR foam

Art. no: 960204xx

Fabric:

Messenger 4, Metric** **15.960**

Pandoria, Parotega **19.635**

Hallingdal 65, Tonus 4, Steelcut Trio **22.045**

Harald 3 **24.495**

Vidar **25.720**

Leather:

Ultra **26.635**

Hero **28.660**



CLOVERLEAF SOFA - 4 units

Design: Verner Panton, 1969

Build-up system

L: 383 cm, W: 215 cm

Seat capacity min. 7

Wood frame, CMHR foam

Art. no: 960204xx

Fabric:

Messenger 4, Metric** **22.015**

Pandoria, Parotega **26.795**

Hallingdal 65, Tonus 4, Steelcut Trio **30.065**

Harald 3 **33.375**

Vidar **35.045**

Leather:

Ultra **35.825**

Hero **40.420**



CLOVERLEAF SOFA - 5 units

Design: Verner Panton, 1969

Build-up system

L: 343 cm, W: 306 cm

Seat capacity min. 9

Wood frame, CMHR foam

Art. no: 960204xx

Fabric:

Messenger 4, Metric** **28.070**

Pandoria, Parotega **33.950**

Hallingdal 65, Tonus 4, Steelcut Trio **38.160**

Harald 3 **42.255**

Vidar **44.375**

Leather:

Ultra **45.930**

Hero **49.605**

SOFAS

RETAIL PRICE USD



CLOVERLEAF SOFA - 6 units

Design: Verner Panton, 1969

Build-up system

L: 382 cm, W: 340 cm

Seat capacity min. 11

Wood frame, CMHR foam

Art. no: 960204xx

Fabric:

Messenger 4*, Metric* 34.125

Pandoria, Parotega 40.420

Hallingdal 65, Tonus 4, Steelcut Trio 46.255

Harald 3 51.445

Vidar 54.005

Leather:

Ultra 55.120

Hero 60.630



CLOVERLEAF SOFA - 2 units+1 ext.

Design: Verner Panton, 1969

Build-up system

L: 359 cm, W: 116 cm

Seat capacity min. 5

Wood frame, CMHR foam

Art. no: 960205xx

Fabric:

Messenger 4*, Metric* 16.530

Pandoria, Parotega 20.205

Hallingdal 65, Tonus 4, Steelcut Trio 22.960

Harald 3 25.720

Vidar 27.005

Leather:

Ultra 22.185

Hero 25.305



CLOVERLEAF SOFA - 2 units+2 ext.

Design: Verner Panton, 1969

Build-up system

L: 489 cm, W: 116 cm

Seat capacity min. 7

Wood frame, CMHR foam

Art. no: 960205xx

Fabric:

Messenger 4*, Metric* 23.880

Pandoria, Parotega 28.945

Hallingdal 65, Tonus 4, Steelcut Trio 32.150

Harald 3 35.825

Vidar 37.620

Leather:

Ultra 35.815

Hero 40.705



CLOVERLEAF SOFA - 2 units+3 ext.

Design: Verner Panton, 1969

Build-up system

L: 619 cm, W: 116 cm

Seat capacity min. 9

Wood frame, CMHR foam

Art. no: 960205xx

Fabric:

Messenger 4*, Metric* 30.865

Pandoria, Parotega 36.745

Hallingdal 65, Tonus 4, Steelcut Trio 40.890

Harald 3 45.010

Vidar 47.245

Leather:

Ultra 45.545

Hero 51.655

SOFAS

RETAIL PRICE USD



CLOVERLEAF SOFA - 3 units+1 ext.

Design: Verner Panton, 1969

Build-up system

L: 436 cm, W: 215 cm

Seat capacity min. 7

Wood frame, CMHR foam

Art. no: 960205xx

Fabric:

Messenger 4*, Metric* 22.960

Pandoria, Parotega 27.555

Hallingdal 65, Tonus 4, Steelcut Trio 31.045

Harald 3 34.460

Vidar 36.185

Leather:

Ultra 35.895

Hero 40.740



CLOVERLEAF SOFA - 3 units+2 ext.

Design: Verner Panton, 1969

Build-up system

L: 566 cm, W: 215 cm

Seat capacity min. 9

Wood frame, CMHR foam

Art. no: 960205xx

Fabric:

Messenger 4*, Metric* 29.910

Pandoria, Parotega 35.790

Hallingdal 65, Tonus 4, Steelcut Trio 40.050

Harald 3 44.095

Vidar 46.300

Leather:

Ultra 45.625

Hero 51.680



CLOVERLEAF SOFA - 4 units+1 ext.

Design: Verner Panton, 1969

Build-up system

L: 436 cm, W: 342 cm

Seat capacity min. 9

Wood frame, CMHR foam

Art. no: 960205xx

Fabric:

Messenger 4*, Metric* 29.395

Pandoria, Parotega 34.905

Hallingdal 65, Tonus 4, Steelcut Trio 39.315

Harald 3 43.175

Vidar 45.325

Leather:

Ultra 45.705

Hero 51.725



CLOVERLEAF SOFA - 4 units+2 ext.

Design: Verner Panton, 1969

Build-up system:

L: 566 cm, W: 342 cm

Seat capacity min. 11

Wood frame, CMHR foam

Art. no: 960205xx

Fabric:

Messenger 4*, Metric* 36.010

Pandoria, Parotega 42.255

Hallingdal 65, Tonus 4, Steelcut Trio 48.240

Harald 3 53.280

Vidar 55.950

Leather:

Ultra 55.435

Hero 62.670

SOFAS - EXTRAS

RETAIL PRICE USD



CLOVERLEAF SOFA

CHARGING STATION

Pixel charging station. One electrical unit per cloverleaf element, including power outlet, USB- and data port

Power outlet available for different national supply types.

Art. no: 4896xx (price per element)

1.225



CLOVERLEAF SOFA - PLINTH

Inset from edge of sofa (approx. 7 cm)

H: 4 cm (which adds to the overall height of sofa)

Art. no: 489604 / 489606

Right or left **420**

Art. no: 489605

Middle **555**

Art. no: 489607

Extension **555**

SOFAS IN- & OUTDOOR

RETAIL PRICE USD



CLOVERLEAF SOFA - IN / OUTDOOR.

Design: Verner Panton, 1969/2016

Build-up system, Moulded PE plastic
L: 114,5 cm, W: 115,5 cm

Art. no: 96020701

Right unit **3.500**



CLOVERLEAF SOFA - IN / OUTDOOR.

Design: Verner Panton, 1969/2016

Build-up system, Moulded PE plastic
L: 114,5 cm, W: 115,5 cm

Art. no: 96020702

Left unit **3.500**



CLOVERLEAF SOFA - IN / OUTDOOR.

Design: Verner Panton, 1969/2016

Build-up system, Moulded PE plastic
L: 137,3 cm, W: 141,6 cm

Art. no: 96020703

Middle unit **4.550**



CLOVERLEAF SOFA - IN / OUTDOOR.

Design: Verner Panton, 1969/2016

Build-up system, Moulded PE plastic
L: 130 cm, W: 113 cm

Art. no: 96020704

Extension unit **4.550**

COLOUR OPTIONS BY REQUEST

White (75): In stock

Other colours: Please contact us for delivery time



TABLES

RETAIL PRICE USD



MODULAR TABLE

Design: Verner Panton, 1959/1960

H: 36 cm; Ø50 cm, Base: Ø34 cm
Frame : Solid metal Ø16mm, polished and chrome plated
Top : MDF, poly coated

Art. no: 920501-10906

Black

420



MODULAR TABLE

Design: Verner Panton, 1959/1960

H: 36 cm; Ø50 cm, Base: Ø34 cm
Frame : Solid metal Ø16mm, polished and chrome plated
Top : MDF, poly coated

Art. no: 920501-10905

White

420



MODULAR TABLE

Design: Verner Panton, 1959/1960

H: 36 cm; Ø50 cm, Base: Ø34 cm
Frame : Solid metal Ø16mm, polished and chrome plated
Top : Carrara marble

Art. no: 920503-10905

White

1.095

Art. no: 920503-10909

Brown marble

1.095



PARTY SET

Design: Verner Panton, 1963

H: 66 cm; Ø50 cm
Set consists of 5 x cylinders
Moulded laminated wood
Chrome plated castors

Art. no: 930303-05

Black

3.300

TABLES

RETAIL PRICE USD



SERIE 430 TABLE

Design: Verner Panton, 1967

H: 75,5 cm; Ø: 120 cm or Ø: 160 cm

Frame: Black or white painted metal legs

White: RAL 9016 / Black: 9011

Edge: Painted MDF

Table top: Fenix linoleum



Art. no: 920305

Fenix, Ø120 cm

2.270

Art. no: 920306

Fenix, Ø160 cm

3.495

PANTON MOVE TABLE

Design: Verner Panton, 1972

H: 76,5 cm; L: 200 cm; W: 95 cm

Frame : Powder coated aquare steel tube

White: RAL 9016 / Black: RAL 9005

Top : MDF with Fenix nanotech materiale
on top and lacquered edge

Art. no: 920307

White or Black Fenix

2.795

ILLUMESA

Design: Verner Panton, 1969

Ø: 78 cm, H: 37 cm

White acrylic light / table with yellow cord (IP44)

220V (110V) E27 (E26) max 23 W

(low energy bulb, not included)

Art. no: 2046011001

White

805



STORAGE

RETAIL PRICE USD



BARBOY

Design: Verner Panton, 1963

H: 72.5 cm; Ø38 cm
Moulded painted MDF
Chrome plated castors

Art. no: 930101-05

Black

1.920



BARBOY

Design: Verner Panton, 1963

H: 72.5 cm; Ø38 cm
Moulded painted MDF
Chrome plated castors

Art. no: 930101-06

White

1.920



BARBOY

Design: Verner Panton, 1963

H: 72.5 cm; Ø38 cm
Moulded painted MDF
Chrome plated castors

Art. no: 930101-07

Blue

1.920



BARBOY

Design: Verner Panton, 1963

H: 72.5 cm; Ø38 cm
Moulded painted MDF
Chrome plated castors

Art. no: 930101-99

Orange

1.920

WARDROBE & OFFICE

RETAIL PRICE USD



SYSTEM 1-2-3 MIRROR

Design: Verner Panton, 1973

Width: 59 cm, Height: 169 cm

4 mm double sided mirror

Frame: Chrome plated steel

Butterfly base: Chrome plated steel

Art. no: 930602

Chrome

1.155



SYSTEM 1-2-3 RACK

Design: Verner Panton, 1973

Width: 59 cm, Height: 169 cm

Frame: Chrome plated steel

Butterfly base: Chrome plated steel

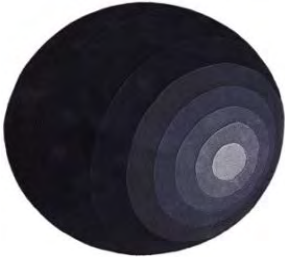
Art. no: 930502

Chrome

695

RUGS

RETAIL PRICE USD



LUNA RUG

Design: Verner Panton, 1979

Ø120 cm

100% New Zealand Wool, Hand tufted

Art. no: 940601-16

Grey

485



LUNA RUG

Design: Verner Panton, 1979

Ø120 cm

100% New Zealand Wool, Hand tufted

Art. no: 940601-19

Yellow

485



LUNA RUG

Design: Verner Panton, 1979

Ø120 cm

100% New Zealand Wool, Hand tufted

Art. no: 940601-17

Red

485



PANTON GRANDE RUG

Design: Verner Panton, 1965

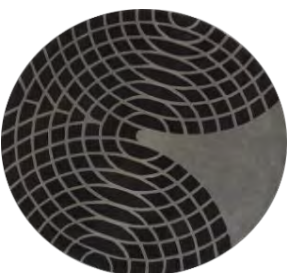
Ø220 cm

100% New Zealand Wool, Hand tufted

Art. no: 940220-10

Yellow

1.830



PANTON GRANDE RUG

Design: Verner Panton, 1965

Ø220 cm

100% New Zealand Wool, Hand tufted

Art. no: 940220-16

Grey

1.830

RUGS

RETAIL PRICE USD



PANTON GRANDE RUG

Design: Verner Panton, 1965

Ø220 cm

100% New Zealand Wool, Hand tufted

Art. no: 940220-301

Brown & sand

1.830



WAVE RUG

Design: Verner Panton, 1974

L: 240 cm; W: 170 cm

100% New Zealand Wool, Hand tufted

Art. no: 940701-10

Yellow

2.095



WAVE RUG

Design: Verner Panton, 1974

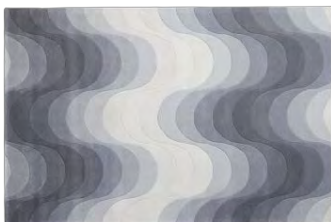
L: 240 cm; W: 170 cm

100% New Zealand Wool, Hand tufted

Art. no: 940701-99

Orange

2.095



WAVE RUG

Design: Verner Panton, 1974

L: 240 cm; W: 170 cm

100% New Zealand Wool, Hand tufted

Art. no: 940701-16

Grey

2.095

WALL DECORATIONS

RETAIL PRICE USD



MIRROR SCULPTURES, 1 PYRAMID

Design: Verner Panton, 1965

W: 48 cm; L: 48 cm; D: 27 cm

3 mm clear acrylic (PMMA)

Art. no: 930404

Silver

440



MIRROR SCULPTURES, 4 PYRAMIDS

Design: Verner Panton, 1965

W: 48 cm; L: 48 cm; D: 14,50 cm

3 mm clear acrylic (PMMA)

Art. no: 930405

Silver

440



MIRROR SCULPTURES, 9 PYRAMIDS

Design: Verner Panton, 1965

W: 48 cm; L: 48 cm; D: 10 cm

3 mm clear acrylic (PMMA)

Art. no: 930406

Silver

440

THROWS

RETAIL PRICE USD



MIRROR THROW 130x198 cm

Design: Verner Panton, 1965

100% New Zealand wool
Packed in brown cardboard giftbox

Art. no: 940103-98 (price per throw)

Yellow

345



MIRROR THROW 130x198 cm

Design: Verner Panton, 1965

100% New Zealand wool
Packed in brown cardboard giftbox

Art. no: 940103-99 (price per throw)

Orange

345



MIRROR THROW 130x198 cm

Design: Verner Panton, 1965

100% New Zealand wool
Packed in brown cardboard giftbox

Art. no: 940103-07 (price per throw)

Blue

345



MIRROR THROW 130x198 cm

Design: Verner Panton, 1965

100% New Zealand wool
Packed in brown cardboard giftbox

Art. no: 940103-05 (price per throw)

Black

345

THROWS

RETAIL PRICE USD



POLETTE THROW 135x175 cm

Design: Verner Panton, 1965

100% Alpaca wool

Packed in brown cardboard giftbox

Art. no: 940104-96 (price per throw)

Sand

430



POLETTE THROW 135x175 cm

Design: Verner Panton, 1965

100% Alpaca wool

Packed in brown cardboard giftbox

Art. no: 940104-97 (price per throw)

Burgundy

430

Designed by
VERNER PANTON
Produced Exclusively by
VERPAN

FRANSENGROUP

Verpan is part of Frandsen Group - a family owned company established in 1964.



VERPAN APS

EGESKOWEJ 29
8700 HORSENS
DENMARK

+45 76 58 18 82

INFO@VERPAN.COM

WWW.VERPAN.COM